



India Meteorological Department  
(Ministry of Earth Sciences)

**BULLETIN NUMBER: 21 (BOB/04/2021)**

**TIME OF ISSUE: 2000 HOURS IST**

**DATED: 27.09.2021**

**FROM: INDIA METEOROLOGICAL DEPARTMENT (FAX NO. 24643965/24699216/24623220)**

**TO: CONTROL ROOM, NDM, MINISTRY OF HOME AFFAIRS (FAX.NO. 23093750)  
CONTROL ROOM NDMA (FAX.NO. 26701729)  
CABINET SECRETARIAT (FAX.NO.23012284, 23018638)  
PS TO HON'BLE MINISTER FOR S & T AND EARTH SCIENCES (FAX NO.23316745)  
SECRETARY, MOES, (FAX NO. 24629777)  
H.Q. (INTEGRATED DEFENCE STAFF AND CDS) (FAX NO. 23005137/23005147)  
DIRECTOR GENERAL, DOORDARSHAN (23385843)  
DIRECTOR GENERAL, AIR (23421105, 23421219)  
PIB MOES (FAX NO. 23389042)  
UNI (FAX NO. 23355841)  
D.G. NATIONAL DISASTER RESPONSE FORCE (NDRF) (FAX NO. 26105912, 2436 3260)  
DIRECTOR, PUNCTUALITY, INDIAN RAILWAYS (FAX NO. 23388503)  
CHIEF SECRETARY, ANDHRA PRADESH (FAX NO. 0863-2441029, 08645-246600)  
CHIEF SECRETARY, TELANGANA (FAX NO. 040-23453700)  
CHIEF SECRETARY, CHATTISGARH (FAX NO 0771-2221206)  
CHIEF SECRETARY, MAHARASHTRA (FAX NO 022-22028594)  
CHIEF SECRETARY, GUJARAT (FAX NO 079-23250305)  
CHIEF SECRETARY, DAMAN ,DIU,DADRA & NAGAR HAVELI (FAX NO 0260-2230775)  
CHIEF SECRETARY, MADHYA PRADESH (FAX NO 755-2441076)  
CHIEF SECRETARY, KARNATAKA (FAX NO 08022258913)**

**Sub: Deep Depression (remnant of Cyclonic Storm 'GULAB') weakened into a Depression over north Telangana and adjoining south Chattisgarh and Vidarbha.**

The Deep Depression over south Odisha and adjoining south Chhattisgarh moved west-northwestwards with a speed of 33 kmph during last 06 hours, weakened into a Depression and lay centered at 1730 hrs IST of 27<sup>th</sup> September 2021 over north Telangana and adjoining south Chattisgarh and Vidarbha near Lat. 18.6°N and Long. 80.1°E, about 65 km east-southeast of Ramagundam (Telangana) and 125 km northeast of Bhadrachalam (Telangana).

It is likely to move west-northwestwards and weaken into a Well Marked Low Pressure Area during next 24 hours. The system is likely to emerge into northeast Arabian Sea and adjoining Gujarat coast around 30<sup>th</sup> September evening and there is likelihood for the system to further intensify over northeast Arabian Sea during the subsequent 24 hours.

**Warnings:**

**(i) Rainfall**

- 27<sup>th</sup> Sept.: Light to moderate rainfall at most places with **heavy to very heavy & extremely heavy falls at isolated places** very likely over Telangana, Marathwada Vidarbha, heavy to very heavy falls at isolated places over North Interior Karnataka, Madhya Maharashtra and

heavy falls at isolated places over south Chhattisgarh, Rayalaseema and West Madhya Pradesh.

- 28<sup>th</sup> Sept.: Light to moderate rainfall at most places with **heavy to very heavy & extremely heavy falls at isolated places** very likely over Konkan & Goa, Madhya Maharashtra and Gujarat region; heavy to very heavy falls at isolated places over Marathwada and Saurashtra & Kutch and heavy rainfall at isolated places over West Madhya Pradesh and Vidarbha.
- 29<sup>th</sup> Sept.: Light to moderate rainfall at most places with **heavy to very heavy & extremely heavy falls at isolated places** very likely over Saurashtra & Kutch and heavy to very heavy falls at isolated places over Gujarat region and Konkan.

**(ii) Wind warning**

- Squally wind, speed reaching 40-50 kmph gusting to 60 kmph, is likely to prevail over north Telangana and adjoining districts of south Chhattisgarh & Vidarbha during next 12 hours and decrease thereafter.

**(vii) EXPECTED IMPACT & ACTION SUGGESTED due to Strong winds & very Heavy/Extremely heavy Rainfall.**

- Partial Damage to thatched huts.
- Minor damage to power and communication lines due to breaking of branches and uprooting of trees.
- Major damage to Kutcha and minor damage to Pucca roads.
- Localized Flooding of roads, inundation and water logging in low lying areas and closure of underpasses mainly in urban areas of the above region.
- Occasional reduction in visibility due to heavy rainfall.
- Disruption of traffic in cities due to water logging in roads.
- Possibilities of damage to vulnerable structure.
- Localized Landslides/Mudslides
- Damage to standing crops and horticulture including paddy, banana, papaya trees and orchards due to inundation and strong winds.
- It may lead to riverine flooding in some river catchments (for riverine flooding please visit Web page of CWC)

**Action Suggested.**

- Avoid staying in vulnerable structure.
- Avoid going to areas that face the water logging problems often.
- Check for traffic congestion on your route before leaving for your destination.
- Follow any traffic advisories that are issued in this regard.
- Follow IMD warnings for updates

**(Sunitha Devi. S)**  
**Scientist-F, RSMC, New Delhi**

**Next bulletin will be issued at 0230 hrs IST of tomorrow, the 28<sup>th</sup> September, 2021.**

*Copy to: ACWC Kolkata/ Chennai/CWC Bhubaneswar/CWC Visakhapatnam/MC Ranchi/MC Hyderabad/MC Raipur*

<p><b>LEGEND: Heavy Rainfall:</b> 64.5 to 115.5mm, <b>Very Heavy Rainfall:</b> 115.6 to 204.4mm, <b>Extremely Heavy Rainfall:</b> 204.5mm or more. <b>Many Places:</b> 51% to 75% of the stations, <b>Most Places:</b> more than 76% of total stations, <b>Isolated Places:</b> Less than 25% of total stations</p>
---

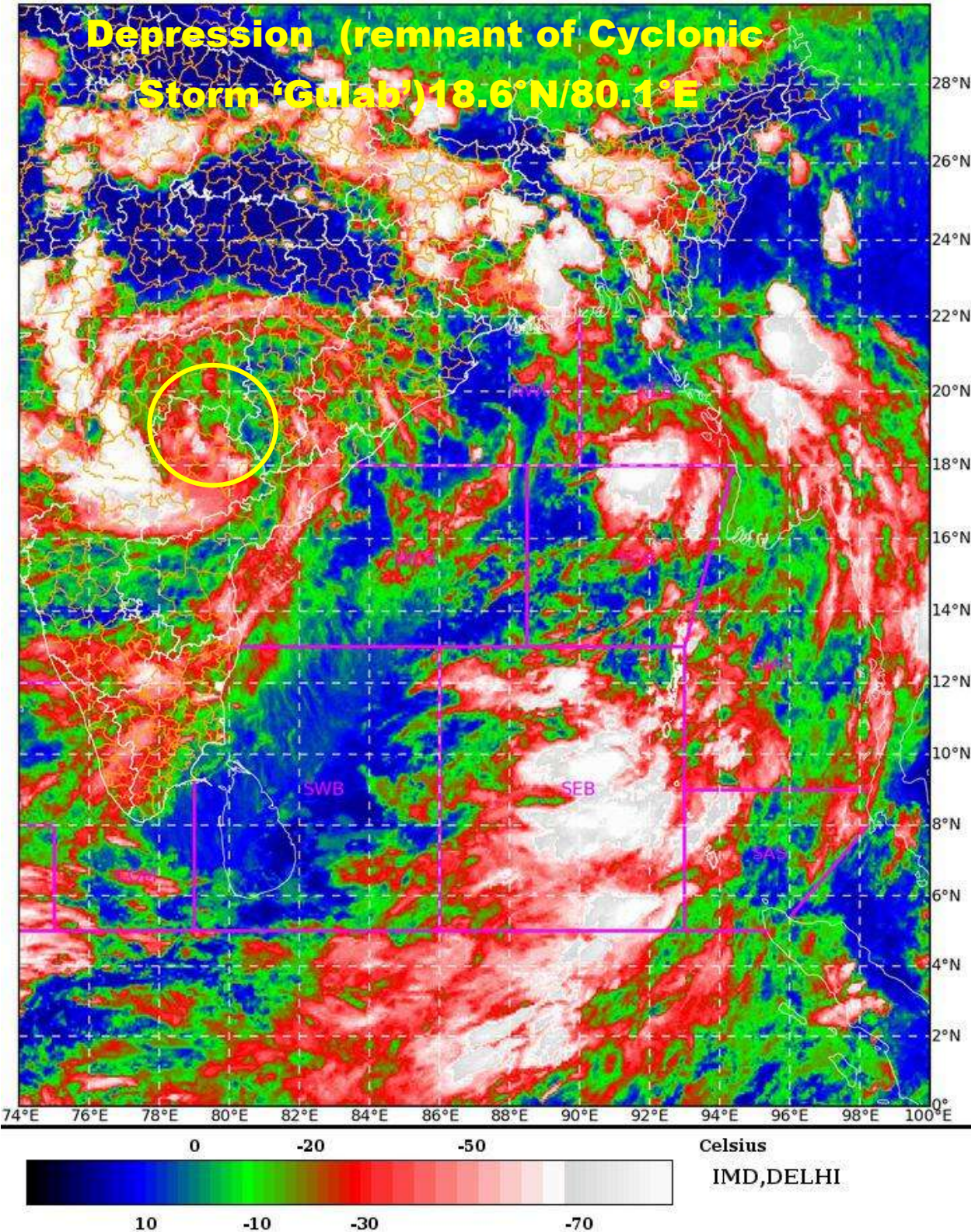
SAT : INSAT-3D IMG

27-09-2021/(1230 to 1256) GMT

IMG\_TIR1\_TEMP 10.8 um

27-09-2021/(1800 to 1826) IST

L1C Mercator





**OBSERVED AND FORECAST TRACK OF DEPRESSION (REMNANT OF CYCLONIC STORM GULAB) OVER NORTH TELANGANA AND ADJOINING SOUTH CHHATISGARH & VIDARBHA BASED ON 1200 UTC OF 27<sup>TH</sup> SEPTEMBER, 2021**



**DATE/TIME IN UTC**

**IST=UTC + 0530**

**L: LOW PRESSURE AREA**

**WML: WELL MARKED LOW PRESSURE AREA**

**D: DEPRESSION (17-27 KT)**

**DD: DEEP DEPRESSION (28-33 KT)**







**CS: CYCLONIC STORM (34-47 KT)**

**SCS: SEVERE CYCLONIC STORM (48-63KT)**

**VSCS: VERY SEVERE CYCLONIC STORM (64-89 KT)**

**ESCS: EXTREMELY SEVERE CYCLONIC STORM (90-119 KT)**

**SuCS: SUPER CYCLONIC STORM ( $\geq 120$  KT)**

-  LESS THAN 34 KT
-  34-47 KT
-   $\geq 48$  KT
-  OBSERVED TRACK
-  FORECAST TRACK
-  CONE OF UNCERTAINTY

### Sub-division wise heavy rainfall warning for next 5 days

